

National Public Seating Order Fulfilment System

The NPS Packing system allows orders to be filled more accurately and processed more efficiently – in many cases shipping within 24 hours of receiving the order.

When an order is received, it is reviewed, and when complete, Pick Tickets are printed. NPS has several types of products; each is picked or assembled in a different department in the warehouse. The Pick Ticket printing process splits the order by department and prints a Departmental Pick Ticket in each department on the order. For each item in inventory, we have identified how many fit on a pallet and whether it needs a double skid or a quadruple skid, and based on that we compute how many skids are needed for the order for this department.

In each department, the picker will scan the order barcode on the Pick Ticket to start the order. As the order is picked, the picker will scan a Pallet Label or multiple labels to indicate the pallet or pallets used to fill the order.

When the department's portion of the order is complete, the pallets are taken to the shipping dock and checked in by scanning the Pallet Label. When they are checked in a Shipping Label is generated for each pallet in the order.

Once all departments for the order are on the shipping dock, the Shipping Manager can generate paperwork (Packing slips, Bill of Lading and Shipping Control document).

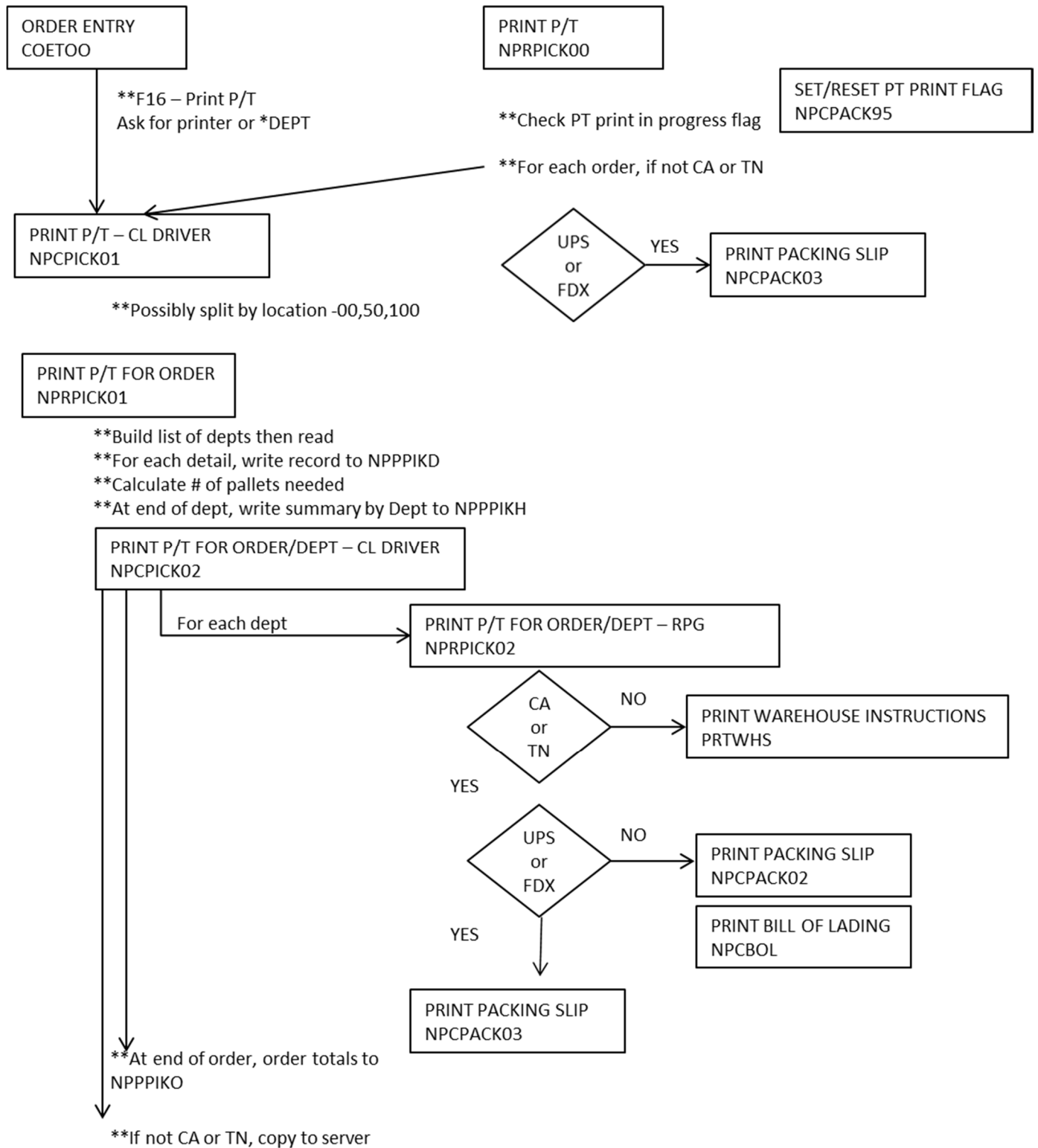
When the order ships (i.e. on the truck), the Dock Supervisor scans the order bar code on the Ship Control Document. This updates all the appropriate files in the packing system as well as informing the billing system to generate an invoice for the order, and informing the EDI system to generate an advance ship notice (EDI 856).

If there are multiple orders for a single customer/carrier, the Shipping manager can consolidate those orders. There are three types of consolidation:

- Multiple small orders combined on a single pallet.
- Multiple palletized orders combined on a single Bill Of Lading, but the individual pallets are not combined.
- Multiple palletized orders combined on a single Bill Of Lading, and some items are moved from pallet to pallet to reduce the # of pallets (and the freight cost).

National Public Seating Order Fulfilment System

Pick Ticket Printing



**National Public Seating
Order Fulfilment System**

Order Picking

ORDER PICKING
NPROPK00

1. START AN ORDER

- **Scan Barcode
- **Verify Latest version
- **Get # of pallets needed
- **Get Picker ID
- **Scan pallet labels 1-by-1

2. COMPLETE PICKING

- **Scan pallet label

COMPLETE PICKING
NPROPK01

- **Display Items for Dept
- **Picker Enters quantity for each item

F2=Close Pallet

- **Close old pallet
- **If called from NPROPK08, EXIT
- **Ask for new pallet # & Continue

F7=End Order

- **Close pallet & Hold or Suspend
- **Continue

Items completely picked

- **Close pallet & Exit

PROGRAMS CALLED

- NPROPK02 – Get next box #
- NPROPK05 – Shipping Mgr (OKS only)
- NPROPK88 – Is order completely picked?
- NPCSHIP2 – Print Shipping Label
- NPCOPK98 – Send email when order is suspended or put on Hold
- NPROPK12 – Add/Update Pallet header
- NPROPK06 – Recalculate order totals & order status

**National Public Seating
Order Fulfilment System**

SHIPPING DOCK

SHIPPING MANAGER
NPROPK05

SELECT ORDERS

**All, On Dock, Ready to Ship, Shipped
**Date Range
**Detail or Summary
**Single Order

Options on Detail Line

P=Prepare to Ship

**Call NPRBOL to print BOL
**Call NPROPK83 to print WH Ins
**Call NPCPACK02 to print P/S and
Ship Control doc

C=Combine 2 pallets

**Call Call NPROPK07 to
combine/split

S=Split to new pallet

**Call NPROPK07 to
combine/split

D=Show Details

**Call NPROPK15 to
show details

Function Key Options

F5=Print labels

** Call NPROPK05

F9=Check in Pallets

** Call NPROPK08

F14=Shipping

** Call NPROPK14

F20=Consolidate orders

** Call NPROPK24

F21=Picking

** Call NPROPK00

F22=Clear files

** Call NPROPKFX

F23=Freight Manager

** Call NPROPK09